

Preface/ Vorwortv
 The Transmission of Pachelbel's Fugues/Die Überlieferung der Fugen Pachelbelsvi

Fugues/Fugen

1.-11. Fugues from the/Fugen aus dem **Sandberger Ms**

1. Fuga (Ricercar) in C supra Ut re mi fa sol 2



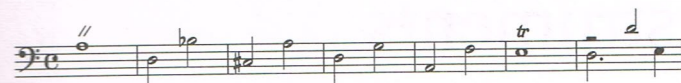
2. Fuga in F..... 6



3. Fuga in D..... 9



4. Fuga in d (Allabreve)..... 12



5. Fuga in a..... 15



6. Fuga in d..... 17



6a. Variant: Fuga in f..... 92



7. Fuga in C..... 19



12.-22. Fugues from the/ Fugen aus dem **London Ms**

12. Fuga à 2 in C 37



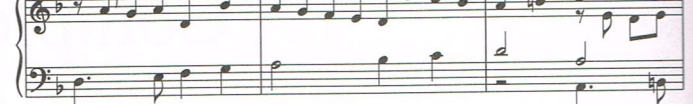
13. Fuga à 2 in C 38



14. Fuga à 3 in C 39



8. Fuga in d 22



9. Fuga in C ("Nachtigall") 27



10. Fuga in D 31



10a. Fuga in D (Variant from Commer) 93



11. Fuga in g 34



15. Fuga in C..... 42



16. Fuga in C..... 44



17. Fuga in c 47



18. Fuga in g (Mixolydian)..... 49

19. Fuga in G..... 50

20. Fuga in g..... 56

21. Fuga in A..... 58

22. Fuga in a..... 60

23.-32. Fugues from Various Sources/ Fugen aus verschiedenen Quellen

23. Fuga in C..... 64

24. Fuga in C..... 66

24a. Praeludium from Ms Berlin 38111..... 95

25. Ricercar in c..... 70

25a. Variant from the Eberlin Ms..... 96

26. Fuga in d..... 74

27. Fuga in d..... 76

28. Fuga in e..... 78

29. Ricercar in f-sharp/ fis-Moll..... 81

30. Fuga à 3 in G..... 84

31. Fuga in B-flat/ B-Dur..... 86

31a. Variant from P 247..... 98

32. Fuga in b/ h-Moll..... 89

Appendix/ Anhang

Fuga in a (Fragment) 100



Dubious Pieces/ Stücke zweifelhafter Echtheit

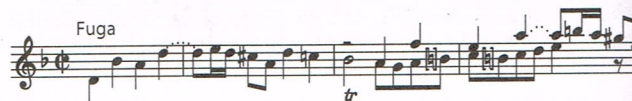
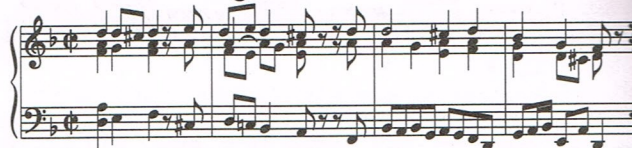
1. Fuga in C 100



2. Præludium et Fuga in c 101



3. Præludium et Fuga in d 101



Editorial Methods Used/ Zur Editionstechnik 101

Critical Commentary 101

Illustrations/ Abbildungen

Facsimile: **Tab Leipzig** Leipziger Städtische Bibliotheken, Sammlung Becker II.2.51 101

Facsimile: **London Ms** London, British Library, Add. MS 31221, fol. 64a (63^v) 101

Facsimile: **Benisch Ms** Yale University Music Library LM5056, p. 66 101